

Log data from your Nortel Networks BCM realtime from any workstation!

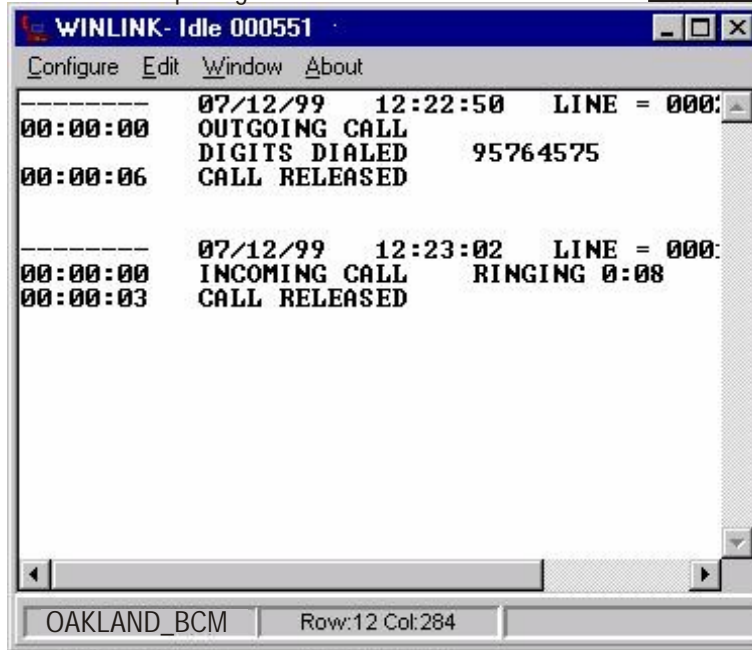
Winlink for Nortel Networks BCM

replaces the Nortel SMDR Box

RSI Winlink for Nortel BCM is the ultimate software for capturing realtime data from

the Nortel Networks Business Communications Manager (BCM). The call detail information is instantly retrieved and displayed realtime. The data is stored to a file or optionally sent to a serial port (mimicking all Nortel Norstar functionality). Winlink for Nortel BCM can work with any call accounting software (including all the RSI offerings) for professional, general business and hospitality environments.

You may automatically have Winlink for Nortel BCM load at system startup and reside on your Microsoft Windows System Tray. Winlink for Nortel BCM will watch for data arriving from the BCM server and capture the data to a specified file.



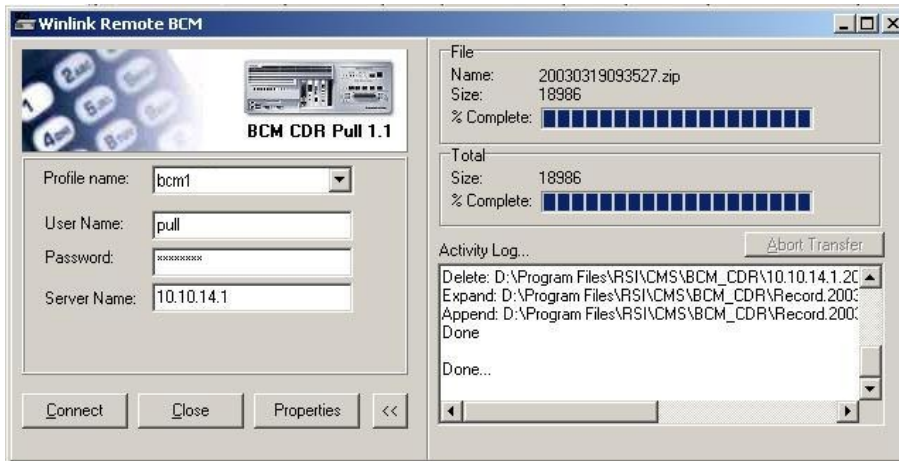
Winlink can monitor any emergency or alarm condition and instantly alert the screen or submit an email to authorized personnel. Calls to emergency services (i.e. 911) can be identified immediately. The calling party will instantly be identified.

If data activity is vital, Winlink for the Nortel BCM will watch for inactivity and take action during a prolonged period of no data.

Winlink Remote for BCM

This solution was introduced for Nortel Networks BCM 3.0 (or later). Data can be polled across a LAN or via dialup. Therefore, you can poll any number of BCMs manually or at a predefined time.

You can select any range of dates or the most recent call records for polling. Data can be compressed using .zip format prior to transmission. At the host side, the data is composed into one large file (Norstar or SL-1 format) for processing by our call accounting software.



Winlink

for BCM

Data storage software for any device with a serial or IP connection

Hospitality
Professional
and
General Business

Resource Software Int'l Ltd.
40 King St. W., Suite 300
Oshawa, Ontario.
L1H 1A4

Phone: 905 576-4575
Fax: 905 576-4705

Web Site
<http://www.telecost.com>
Email
rsi@telecost.com

RSI

Collect data from a centralized host or monitor data in real time!

MINIMUM REQUIREMENTS

Windows 95/98 (with MS DCOM patch)
Windows ME/NT/2000 (with MS DCOM)
Workstation with Ethernet Connection
VGA Monitor
Printer

Winlink

for BCM

Features

Winlink for BCM

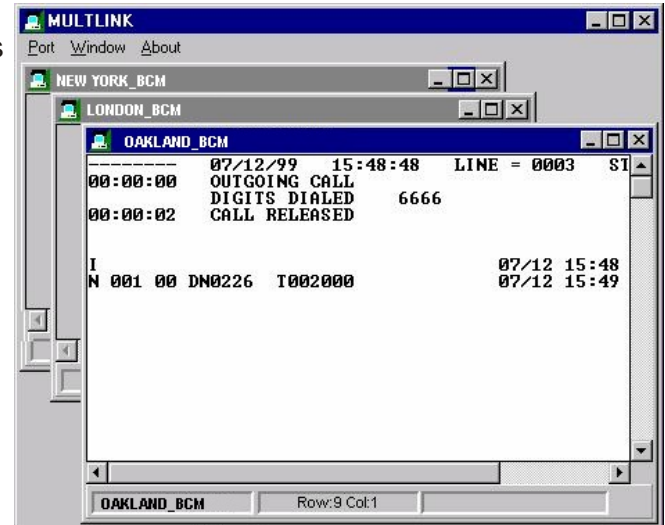
- log data from any Nortel Networks Business Communications (BCM)
- user definable filter to include/exclude specific characters
- forward collected file to another destination at pre-defined times
- complete integration with dialup, FTP and Email server modules
- scan incoming data for alarm or emergency conditions
- inactivity status alert
- automatic character or string terminators
- unlimited file or record size
- resides on the Microsoft Windows system tray
- integrates with other applications (via DDE/OLE, FTP, e-mail)

Multilink for BCM

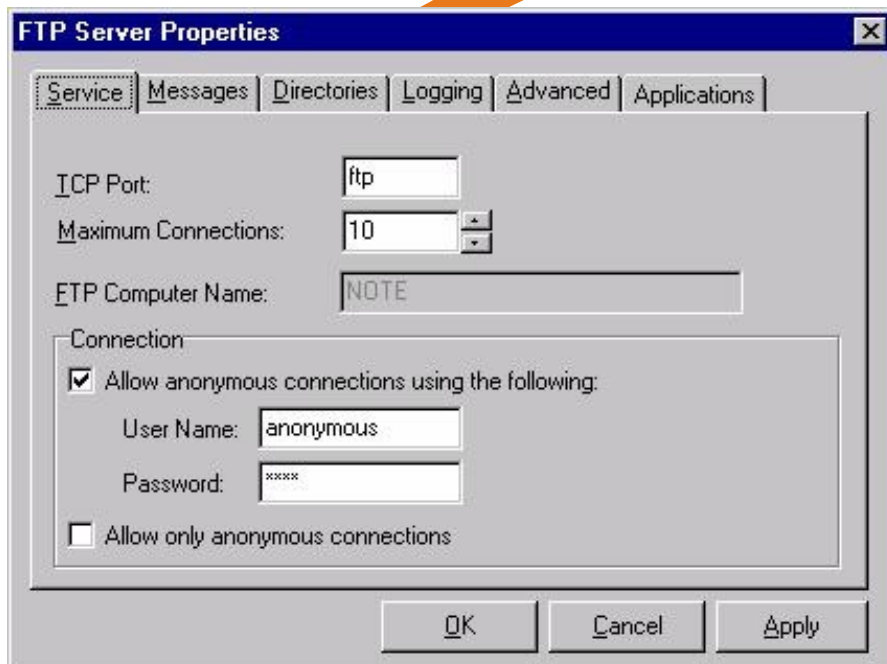
- all functionality of Winlink for BCM
- data collection for up to 4 BCM simultaneously
- merge data from mutiple ports into one file or mutiple files

Winlink Remote for BCM

- Supports Nortel Networks BCM 3.0+
- Retrieve data from a remote BCM using your LAN or Dialup
- Retrieve the most recent data or a data range of calls
- Poll any time of day or night
- Compress the data before transfer (using .zip)
- Uncompress the data after transfer (in Norstar or SL-1 format)
- Schedule or batch poll any number of BCM 3.0+ systems



Sample Multilink for BCM screen demonstrating 3 simultaneous connections to remote Nortel Networks BCM servers.



FTP Server

This module gives any workstation the power to be a host FTP Server. Special privileges may be defined for authorized access. FTP Server is the most efficient, rapid way of transporting large amounts of data across a LAN/WAN environment. You may have any number of FTP Server sites. The software uses standard FTP commands and can be accessed through RSI applications (i.e. call accounting) or any popular FTP software.

For more information:

Resource Software Int'l Ltd.
40 King St. W., Suite 300
Oshawa, Ontario. L1H 1A4

Phone: 905 576-4575
Fax: 905 576-4705
Web: www.telecost.com
Email: rsi@telecost.com